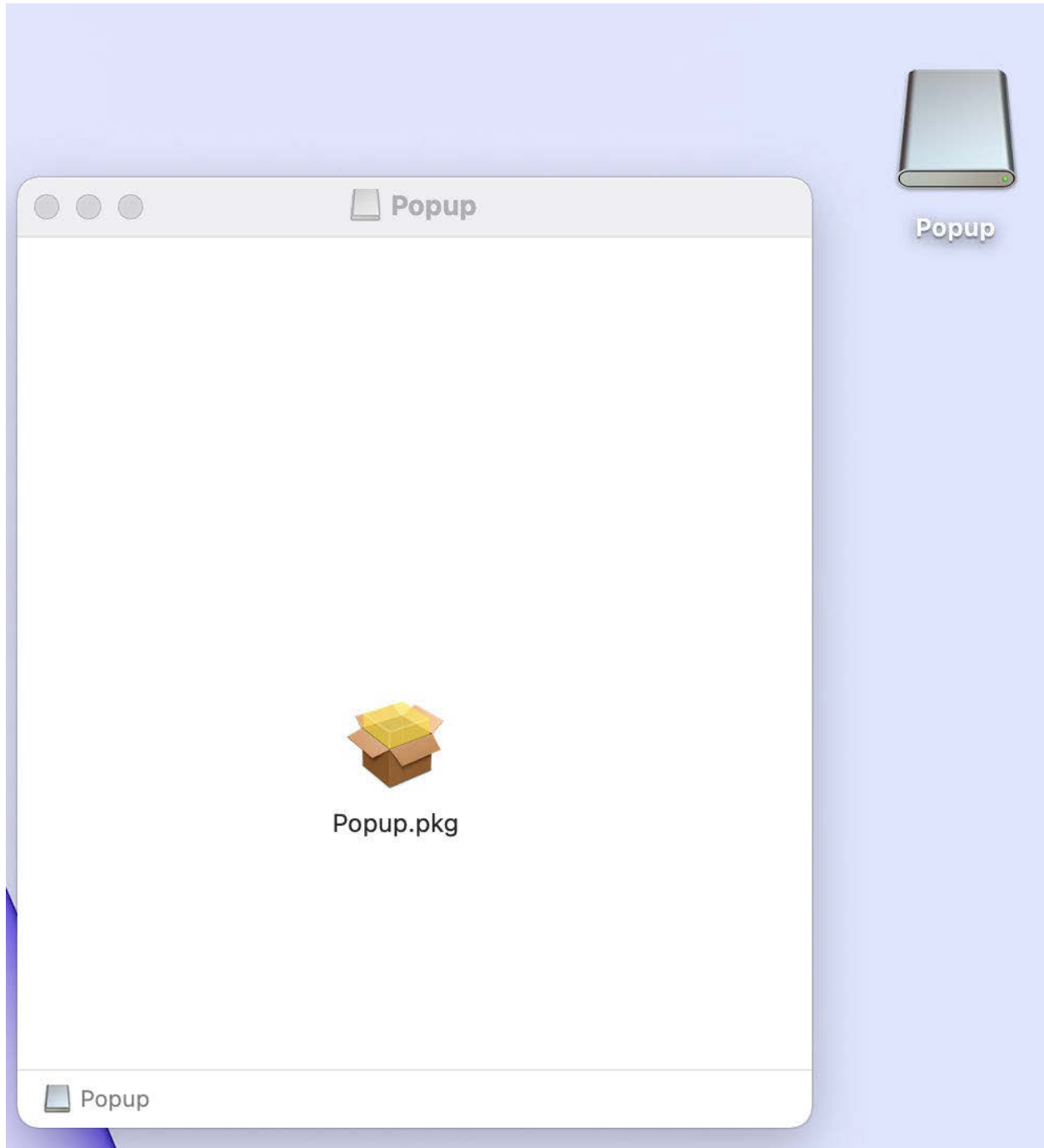
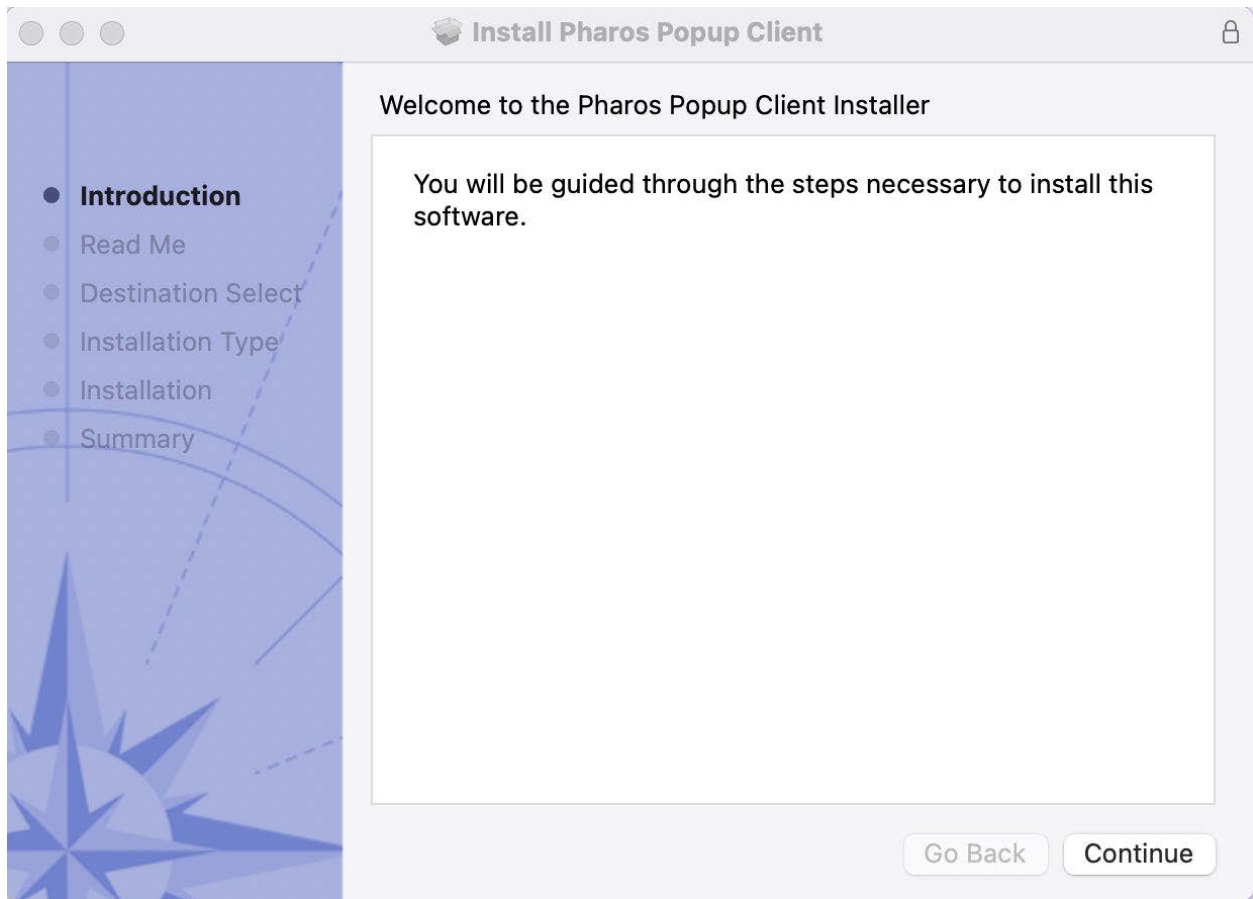


Download the file **SP2\_Popup\_Client-2020.dmg** onto your hard drive and double click it when it finishes.

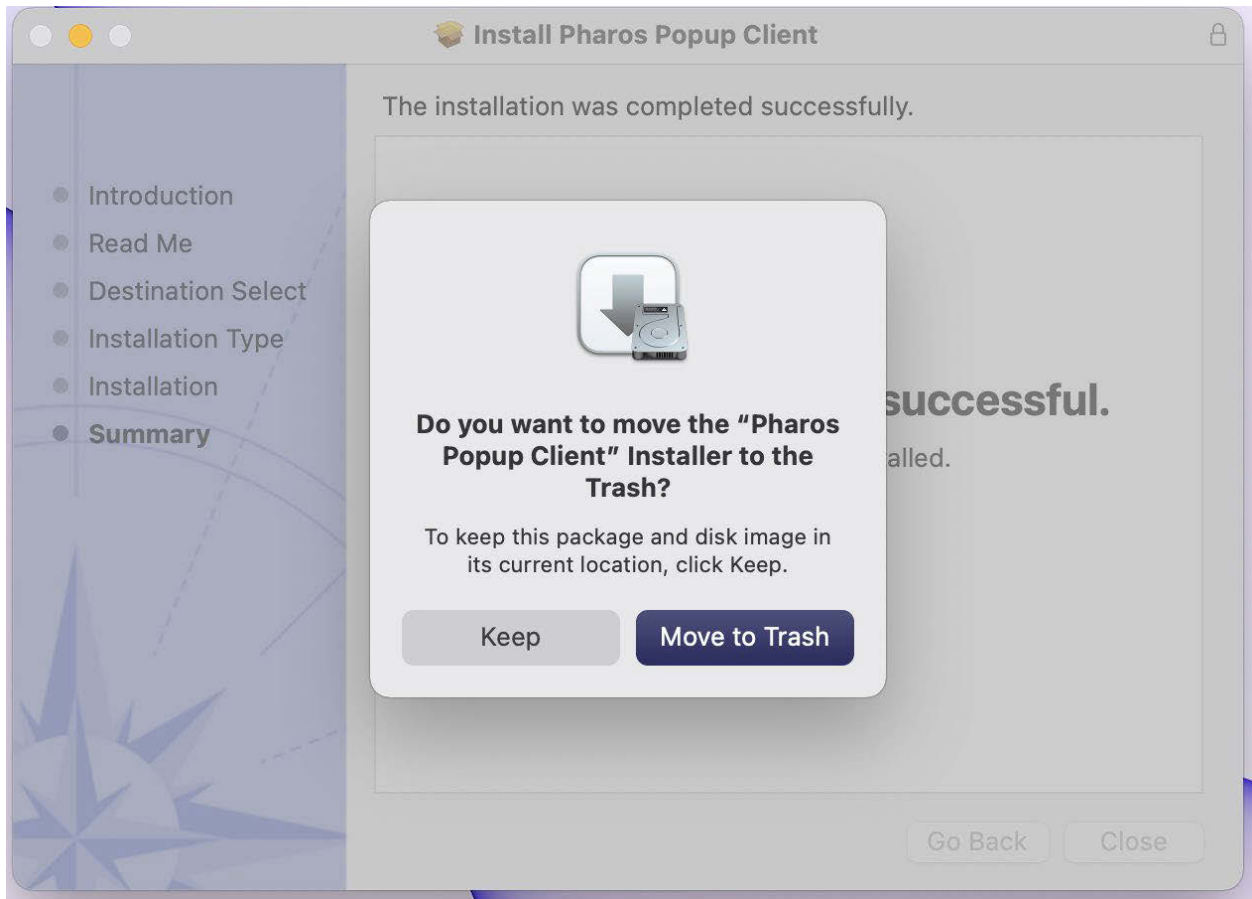


Double Click **Popup.pkg**

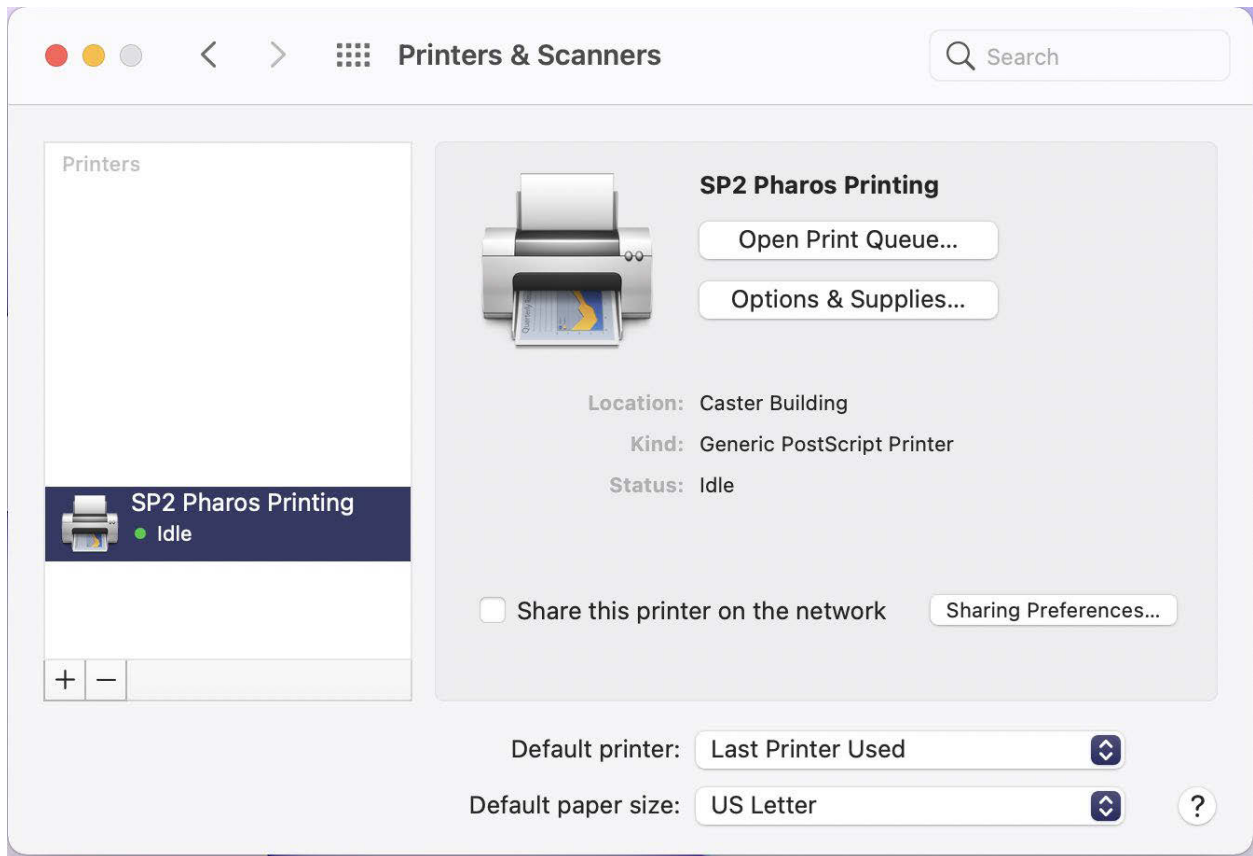


Click Continue.

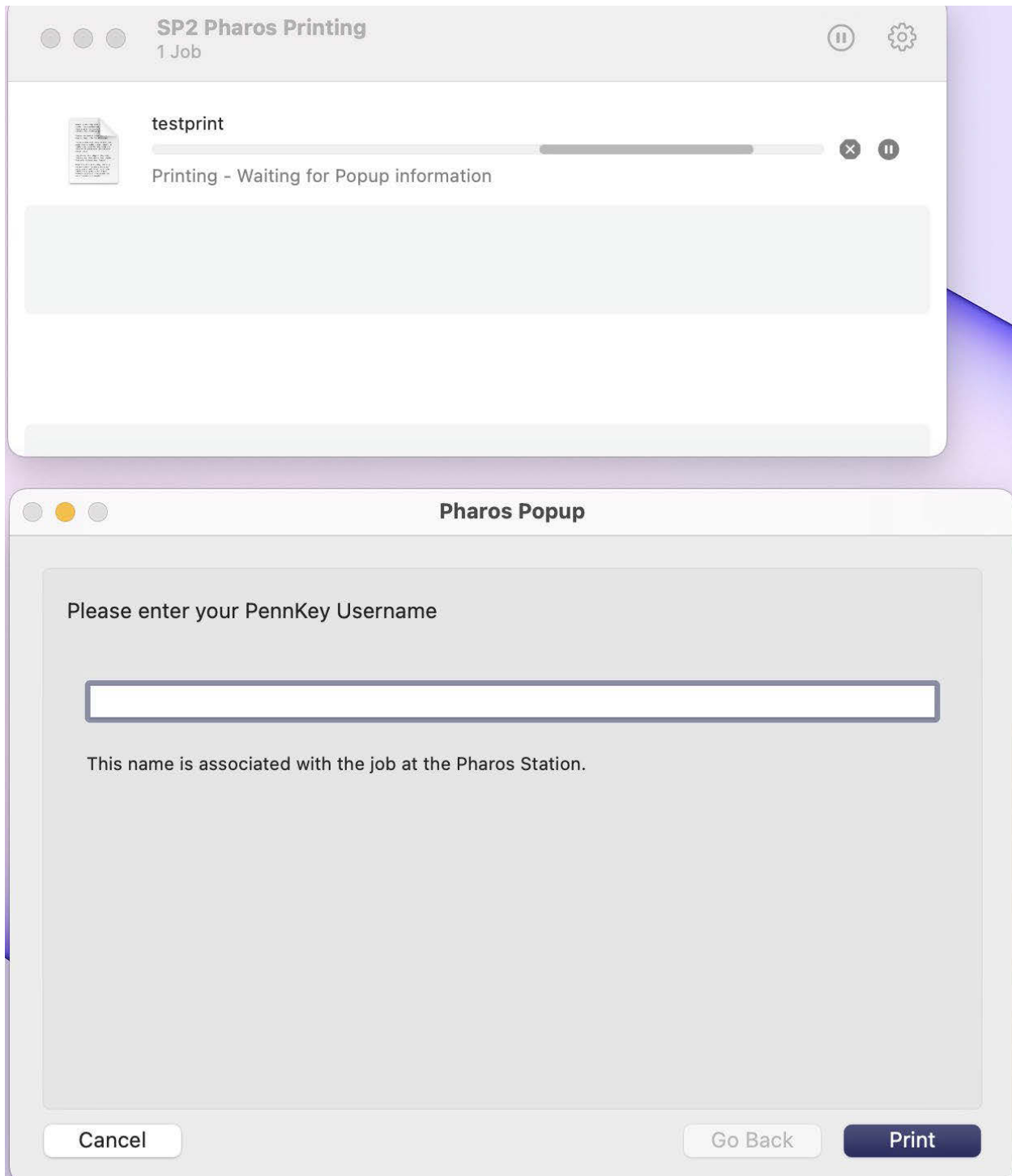
When the install is complete your machine will ask if you wish to move the installer to Trash.



Click Move to Trash



SP2 Pharos Printing - should appear as one of your printers.



When printing, a Pharos Popup window will appear. Please enter your Penkey. (NOT your Penn ID number)

Go to the Release Station next to the Printer.

Currently a Xerox Laser Printer Phaser 5550DT – Does not print in color.