

The passionate pursuit of
social innovation, impact and justice across the globe

Program Overview

The PhD in Social Welfare is an interdisciplinary program that prepares students to be scholars, researchers, and leaders in the field of social welfare. The program emphasizes an individualized educational plan that, building on areas of student interest and faculty expertise, advances knowledge.

Each year, the program enrolls four to six students with a proven record of academic excellence and demonstrated potential to contribute to the field. The goal of the program is to train scholars; it is geared for people interested in the pursuit of intellectual and scientific inquiry.

Admission Requirements

Students are required to have a master's degree in social work or a social science field before they can enter the PhD program.

Full-time work toward the PhD degree is expected.

Applicants for admission to the PhD program must submit:

- Transcripts for all graduate and undergraduate programs attended;
- GRE scores (Institutional Code: 2926, Department Code: 5001);
- Three letters of recommendation (two academic references and one employment reference);
- A sample of written work; and
- A statement of academic and career goals.

For international students whose first language is not English, we require official TOEFL or IELTS scores taken in the last two years. This applies to international students who have studied in the U.S. as well as those who have studied only outside the U.S.

Application Deadline

All application materials must be received by the application deadline of December 15.



Partial list of our recent graduates' employment

Post-doc

Columbia University and New York Psychiatric Institute
Philadelphia VA Medical Center

Government and community

Administrative Office of Pennsylvania Courts, Research & Statistics Dept.

Department of Health & Human Services, Office of the Inspector General

Philadelphia Workforce Investment Board, Research

Academic

Bryn Mawr, School of Social Work

Case Western Reserve University, Mandel School of Applied Sciences

John Jay College of Criminal Justice

Kutztown University, Department of Social Work

New York University, School of Social Work

Pusan National University, Department of Social Work

Rutgers, School of Criminal Justice

Rutgers, School of Social Work

Simmons College, School of Social Work

University of California, Berkeley, School of Social Work

University of New England, School of Social Work

University of Pennsylvania, School of Medicine

University of Pittsburgh, School of Social Work

University of South Florida, School of Social Work

University of Southern California, School of Social Work

University of Tennessee, College of Social Work

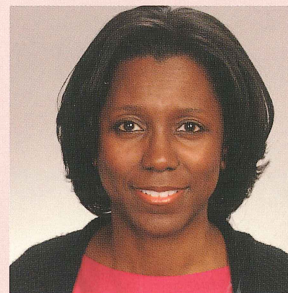
University of Wisconsin, Milwaukee, School of Nursing



Penn's PhD program in Social Welfare showed me how to use research and data to assess social services and suggest evidence-based improvements. I was able to use those skills during and after the program to help local non-profits evaluate their work and sustain the funds needed to continue their work. I now use those same skills to

develop and maintain a Division of Performance Management and Accountability for the Department of Human Services in Philadelphia.

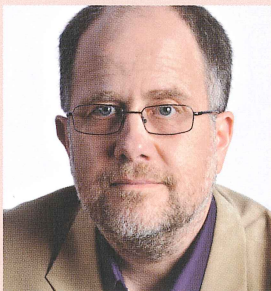
Susan Kinnevy, PhD'02, Director, Special Projects, DHS



Just before the doors of the Penn School of Social Work opened in 1908, W.E.B. DuBois conducted one of the first extensive neighborhood surveys and published his seminal book, *The Philadelphia Negro*. I arrived at just the right time to be involved in another groundbreaking project at the University of Pennsylvania, the Philadelphia Census of

Congregations Project. Working on this project and other research, helped me to launch a fulfilling research career and establish a circle of wonderful colleagues.

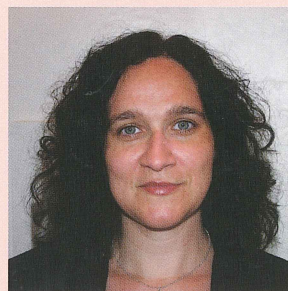
Stephanie Boddie, PhD'02, Senior Research Fellow, Pew Forum on Religion & Public Life



Like most social workers, I pursued an MSW degree with the idea that I could use it to make a difference regarding issues I cared about. I discovered in my first post-MSW job that this might be possible with research focused on pragmatic answers to the health challenges faced by people in jails and prisons. The Penn social welfare Ph.D. provided me a chance to further hone

my skills to do that. I had a world class university as a base to think through my ambitions. I had at my disposal an engaged faculty to connect me to resources to make things happen. Many times I hear colleagues struggle with a choice of whether to be a researcher or an activist. While at Penn, I figured that out: Why must I choose?

Jeffrey Draine, PhD'95, Professor and Chair, Temple University School of Social Work



The PhD program at the Penn School of Social Policy & Practice allowed me to build essential writing, teaching, and analytical skills on the foundation of my previous social work practice. The multidisciplinary nature of the program allowed me to become a well-rounded scholar, and helped confirm my commitment to the field of social work.

I received the guidance and support I needed to complete a dissertation I am proud of, and I felt well-prepared and confident during the job interview process. Currently I am an Assistant Professor in the School of Social Work at the University of Pittsburgh, where I use the knowledge and skills developed at SP2 to help educate and mentor the next generation of social workers.

Rachel Fusco, PhD'08, Associate Professor, University of Pittsburgh School of Social Work

Find out more about how our alums are changing the world at
www.sp2.upenn.edu/phd

or contact Melissa Elfont, Administrative Assistant, at melfont@sp2.upenn.edu; (215) 573-3195.

