

Students at SP2 gain a global perspective through international curricular content, learning from international faculty, interacting with peers from across the globe, engaging in study abroad programs and global immersion experiences. Through hands-on experiences, students have the opportunity to examine social problems through a multicultural lens. The School is committed to preparing students to be leaders of social change across the globe.

The School of Social Policy & Practice takes seriously its responsibility to educate students for leadership positions both nationally and internationally. Thus, the School has created a wide range of international opportunities for students, recent graduates, field instructors, post-doctoral scholars, and visiting scholars. In general, the School's international education and research activities are organized in three primary streams: 1) international research and study opportunities for SP2 students; 2) research and study opportunities for international exchange students; and 3) visiting scholars.

#### **International Research and Study Opportunities for SP2 Students**

Many opportunities exist for students to spend 3-6 weeks during the summer months in another country carrying out a comparative research project on a topic of mutual interest to the student, the student's host institution, and SP2.

SP2 maintains formal student-faculty linkage programs with many institutions in Europe and Asia. SP2 also participates in the international programs organized by other American universities.

SP2 also offers instructor-led coursework abroad. In *Education, Culture, and Social Policy*, led by Dr. Ezekiel Dixon-Román, students study in depth the history and culture of Cuba and then experience it first-hand in four weeks of travel through the country.

In *Post-Colonial Social Work Practice: International Social Welfare in India*, led by Dr. Toorjo Ghose, students examine the global welfare system and its engagement with marginalized communities during a six-week course held in Kolkata, India.

In limited cases, SP2 is able to assist students in setting up independent studies in other countries. In these situations, students must take the initiative with both SP2 and the proposed host institution in

conceptualizing and planning the details of an individualized research program. Students will receive substantial assistance in this effort through their SP2 sponsoring faculty member.

MSSP students may also seek approval for the international experience to fulfill an MSSP elective or internship requirement. Again, students must take the initiative to conceptualize and plan the details with the MSSP Faculty Director and the host institution/faculty.

Additionally, MSW and MSSP students are eligible to participate in the University of Pennsylvania Graduate Certificate in Interdisciplinary Studies in Global Human Rights, which is designed to provide enriched perspectives on human rights. Through this Certificate, students will gain a working knowledge of the core international human rights documents, treaties, and mechanisms. This interdisciplinary certificate is administered by the School of Arts and Sciences.

#### **Research and Study Opportunities at SP2 for International Students**

In addition to SP2 students pursuing research and educational opportunities outside the United States, SP2 also welcomes nationals of other countries into its degree programs. During the current academic year, 50 international students are enrolled in the School's master's and doctoral programs. Like their American counterparts, many of these students also participate in programs of international study outside of the United States and outside their country of origin.

SP2 hosts summer exchange students from its global partners in other countries as well. Every summer from 2010 to 2015 (expected), SP2 hosts a group of summer exchange students from Beijing Normal University in Beijing, China. The students will sit in a six-week class in a summer session, attend a weekly special seminar given by SP2 faculty and staff, and visit several social services agencies in Philadelphia.

#### **Visiting Scholars**

Since its founding in 1908 the School has served as a temporary home for hundreds of Visiting Scholars from throughout the world. The tradition of welcoming scholars from abroad continues today and is reflected in the many international scholars who regard SP2 as their "research home" while in the United States.



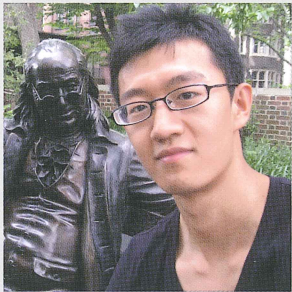
## Examples of recent international independent student research projects

Intimate partner violence among Korean and Korea-American women (conducted in Korea by an MSW student in cooperation with a PhD alum)

Policy implications of the status differential between men and women in Macedonia (conducted in Macedonia by an MSSP student as part of her internship in Macedonia)

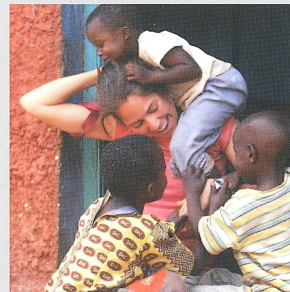
Comparative perspectives on K-12 education in Greenland and Hawaii (conducted in Greenland by an MSW student)

'Resiliency' among Burmese refugee women in Thailand (conducted in Thailand by an MSW student in cooperation with a local NGO in Thailand and a Penn PhD alum)



Studying social policy in an international community allowed us to share our knowledge on social issues and policy practices from different countries and learn from each other, while the opportunity for group work exposed us to a multicultural working environment.

Zichao Zhao, MSSP'13, Research Assistant, Research Department, China International Capital Corporation



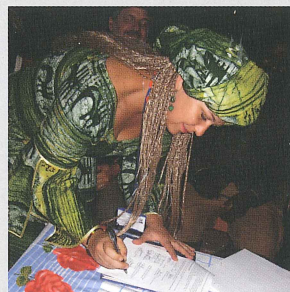
My draw to the social work profession came from my desire for social justice and peace throughout the world. I strive to help clients live reasonably satisfying lives, comfortable with themselves and in society. SP2 has provided me with incredible skills and tools to continue the efforts of what I have believed has become my life calling.

Lindsey Brown, MSW'11, School Based Mental Health Counselor, Guide Youth Services



A Penn MSW prepares one to serve humanity at all levels. My career objectives include working in a context where I can contribute to the identification, selection, and implementation of strategic issues about public service, education, healthcare, welfare, development, and sustained systemic support.

George Werner, MSW'09, Director-General of Liberia's Civil Service Agency; Chair of the Government of Liberia's Inter-ministerial Scholarships Committee



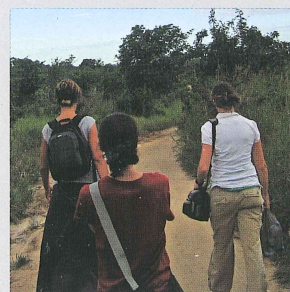
I crafted my MSW educational experience around international social work. I took courses with a global focus, interned at organizations working with immigrants and refugees or working on international policy and advocacy, and participated in the vast variety of global activities at Penn and in Philadelphia.

Anastasia Shown, MSW'07, Assistant Director, Africa Center, University of Pennsylvania



It's a privilege to travel and work with children, families and colleagues from various backgrounds, countries and cultures to both understand the challenges near and far, and to build important collaborations that lead us to greater understanding and advances in health and well-being across the world.

Rachel Biblow, MSW'03, Director of Social Work, Family Relations and Family Services-The Children's Hospital of Philadelphia



I was able to make the most of my volunteer experience in Tanzania because of the cultural competency training and international coursework at SP2. Now, as a consultant to nonprofits providing public health services, I draw on my experience accessing primary and infectious disease healthcare in Tanzania.

Lean Camara, MSW'02, Program Manager, EdTec



Find out more about how our alums are changing the world at  
[www.sp2.upenn.edu/global](http://www.sp2.upenn.edu/global)

or contact the Admissions Department at [apply@sp2.upenn.edu](mailto:apply@sp2.upenn.edu); (215) 898-5539