

Program Overview

The Nonprofit Leadership Program at Penn consists of both a full-time and part-time option for students. This graduate degree program is designed for professionals seeking to assume leadership positions in any of the professional sectors with the passion and drive to be active agents in transformative social change.

- The full-time option spans two academic semesters of study beginning in September and ending in late April. The part-time option can be completed over as many as six academic semesters (or no more than three years).
- The content of the ten (10) course program is divided between: a) eight NPLD courses taken in the School of Social Policy & Practice (each course is one credit unit); b) two electives related to the student's area of specialization; and c) a Leadership Practicum whereby the student commits to devoting 180 hours of professional service working with senior leadership in a local organization in the Philadelphia area.
- Applicants are individuals preparing to enter into senior management ranks in the nonprofit sector. Many are professionals in the areas of business, education, health care, law, public health and social work. Some applicants are individuals seeking to make a mid-career shift into the nonprofit sector or are nonprofit managers being groomed for major leadership responsibilities.

Graduates of this program are prepared for leadership positions in nonprofit and nongovernmental organizations, government, foundations, and charitable, advocacy and volunteer organizations.

Admission Requirements

- Hold a bachelor's degree from an accredited college or university and possess a demonstrated record of academic achievement;
- Submit Graduate Record Exam (GRE) scores (also accept the GMAT and LSAT). Applicants with at least eight years of post-undergraduate work experience may petition to waive the GRE test requirement;
- For international students whose first language is not English, we require official TOEFL or IELTS scores taken in the last two years;
- Submit three professional letters of recommendation by individuals who can speak to your leadership skills; and
- Complete an application and application essay.

Highly qualified applicants will be invited for an interview.

Application Deadline

Highest consideration will be given to those applications completed and ready for review by March 1st. It is strongly encouraged that applicants interested in the Nonprofit Leadership Program submit their applications as early as possible. We aim to admit up to 25-30 students in the full-time track and up to 20 in the part-time track. The on-line application typically is available mid-September of each year and we start admitting students as early as December.



Our graduates have gone on to work at the following organizations:

Back on My Feet
Philadelphia, PA

Cambodian Association of
Greater Philadelphia

Capital One Bank
New York, NY

Clinical Programs, Temple
University Health
Philadelphia, PA

Collegiate Schools
New York, NY

Community Counseling
Services Co. LLC, New York, NY

Generations Humanitarian
Salt Lake, UT

Habitat for Humanity
Philadelphia, PA

National Alliance to End
Homelessness
Washington, D.C.

Nationalities Service Center
Philadelphia, PA

Neighborhood Housing
Services of New Orleans

Social Science Research
Council
New York, NY

SPARK
San Francisco, CA

University of Pennsylvania
Philadelphia, PA



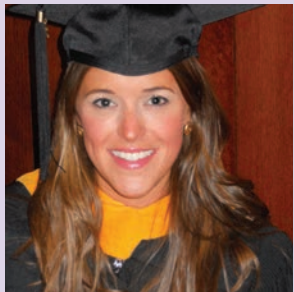
The NPL program helped me to access an invaluable and unconventional understanding of action-based leadership. In my work as a policy specialist, I am frequently called upon to provide innovative perspectives and counter-hegemonic methods for addressing long-standing challenges.

Emily R. Sutcliffe, MS'11, Assistant Director, Toll Public Interest Center, Penn Law & Doctoral Student at Penn's Graduate School of Education



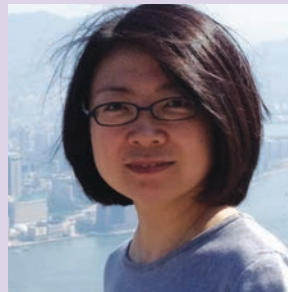
I joined Microsoft China as Community Affairs manager, because the company needed a person with a social work background to handle Corporation Citizenship programs. When I received the Microsoft Global "Corporate Affairs Excellence" Award, I was so grateful to my family, colleagues and my beloved SP2.

Ling Wang, MSW'10, MS'11, Community Affairs Manager, Microsoft (China) Co., Ltd.



The NPL Program's unique pedagogical approach infuses experiential elements into classroom lessons, bringing together an international community of change agents. Most importantly, the program prepared me to meet and exceed professional aspirations and provided a framework for personal growth.

Jessica Leavitt, MS'10, Community Relations Manager, Northeast Region for Capital One Bank, New York, New York



Choosing the NPL program at Penn is one of the most valuable things I have done in my life. It helped enrich my vision in the area of social development and equipped me with new knowledge and skills. Penn is a great environment for meeting people from diverse backgrounds and provides many interesting opportunities.

Tianxue Qiu, MS'09, Independent Consultant, SP2, University of Pennsylvania



I decided to apply to the Nonprofit/NGO Leadership Program to further enhance my executive leadership track and build a high level skill set to both manage and lead powerful nonprofit organizations in the education reform field.

Jon Spack, MS'08, Chief Operating Officer, Spark



The flexibility of the NPL program allowed me to design a custom concentration. The behavioral perspective I gained from this program has proven to be incredibly valuable. Working in an international context, I continually find myself drawing on the experiences and insights I gained as an NPL student.

Ariel Kraten, MS'07, Senior Consultant, MADE-BY, Amsterdam, The Netherlands



Find out more about how our alums are changing the world at
www.sp2.upenn.edu/npl

or contact Eric Ashton, NPL Senior Associate Director, at ashtoned@sp2.upenn.edu; (215) 898-1857.